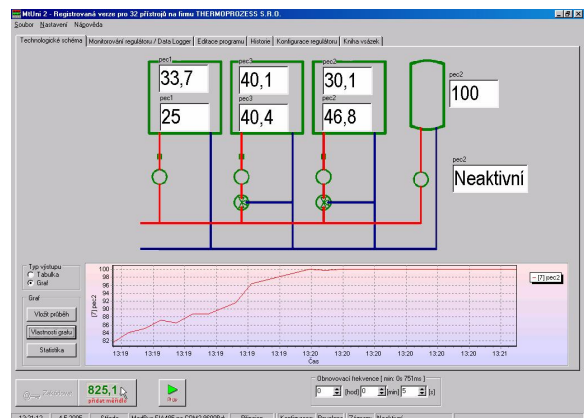
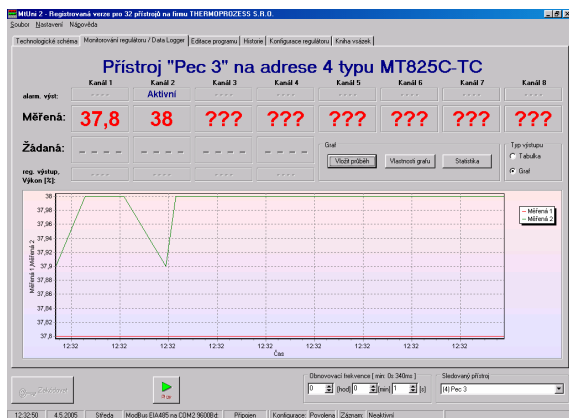
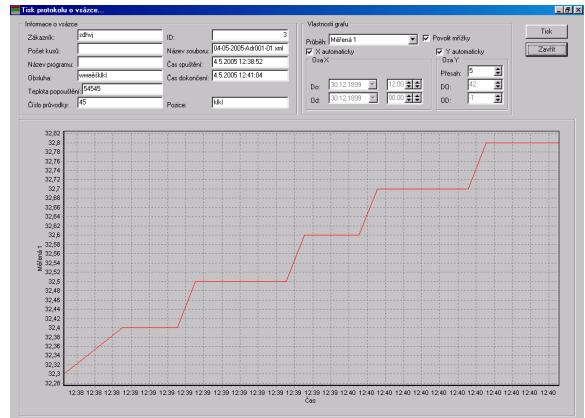
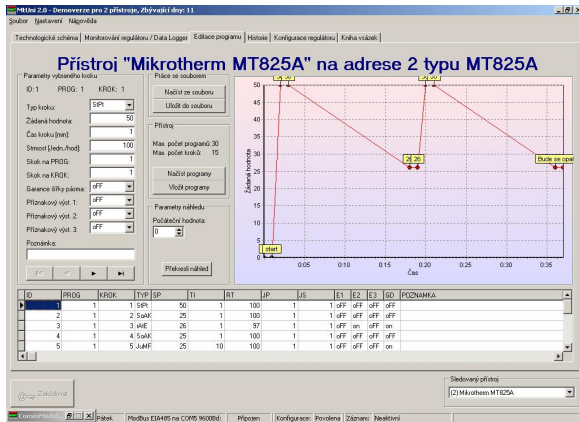


**THERMOPROZESS**

**MtUni2.1**



MtUni 2 is an universal communication software supporting devices Mikrotherm and Watlow with 16- bite communication protocol Modbus RTU. This SW allows the transmission of the programs and the history between PC and controllers , but it is possible to use it as a datalogger of the slow processes. MtUni2 supports collection of data up to 32 devices at the same time. The data are saved in database, which you can export into many formats or print in a protocol form about batch with graphic display of values.

**Technical data:**

- Requires no other supporting programs (for ex. CW2000)
- Automatic devices detection on the bus bar (up to 32 devices)
- Easy filling in with the support of the other devices based on 16-bite protocol Modus RTU
- You can name every device
- Monitoring of selected device
- Monitoring up to 32 selected values of any devices at the same time
- Work with integrated history in devices
- Restoring frequency option after 1 second (1s and more)
- Creation of the technologic process on the user's level
- Datalogger and its registration incl. data saving as a „customer, number of pieces, temperature back up, etc.)

- Measured values export into files: DBF, PDF, RTF, DOC, XLS, HTML, SQL, XML, CSV, DIF, SYLK and LATEX
- Possibility of creation, back up and programs upload for controller MT825A on PC including displaying of graphic view of programed run
- Block up of different functions of the program with password meanly the preset
- Protocol print about batch (on A4 are complete informations – customer, number of pieces,... + graphic run displaying)
- Customs modification in the software

**Pricelist:**

Number of connectible devices	Price (excl. WAT)
1	500,- CZK
2	1400,- CZK
3	2400,- CZK
4	3400,- CZK
5 and more	4400,- CZK